



TASK SELECTION

TRACK OPERATOR ACTIVITY TO IDENTIFY POTENTIAL PROCESS IMPROVEMENTS.

Through activating the Task Selection module of iWAREHOUSE, you can monitor each employee job function, allowing you to:

- + Understand where and how time is being spent
- + Confirm that appropriate vehicles are being used for all applications
- + Correlate vehicle usage (travel, lift, deadman hours) with specific operator functions
- + Balance workforce activity across the warehouse
- + Enhance employee accountability

Task Selection gives you the insights and information to help identify inefficiencies and opportunities for improvement within your organization.

LEARN ABOUT YOUR LABOR. PERFECT YOUR PROCESSES. OPTIMIZE YOUR OPERATION.



FREE 90-DAY TRIAL

OF iWAREHOUSE LABOR MANAGEMENT SYSTEM WITH TASK SELECTION ACTIVATION.

ASK YOUR iWAREHOUSE REPRESENTATIVE FOR COMPLETE DETAILS.



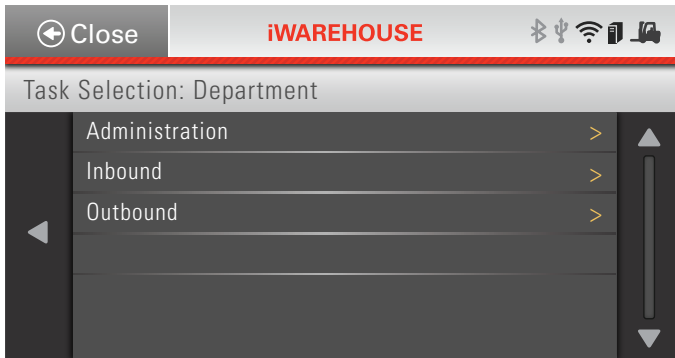
Task Selection gives you visibility into what jobs are being performed, when, and by whom, throughout the warehouse, throughout the day.

iWAREHOUSE
EVOLUTION™

BETTER VISIBILITY. GREATER ACCOUNTABILITY. SUPERIOR PRODUCTIVITY.

The iWAREHOUSE Task Selection module gives you unique insights into the actions and activities of all vehicle operators—job to job, minute by minute.

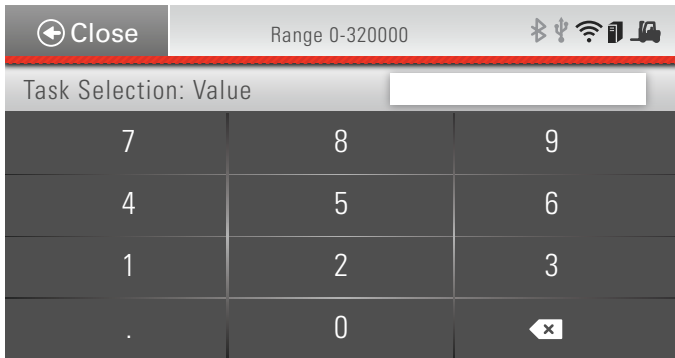
HOW IT WORKS:



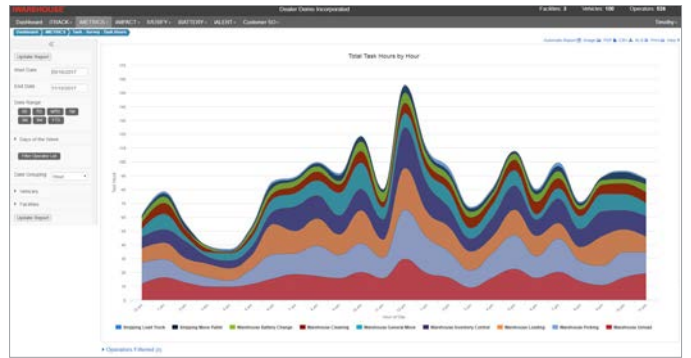
1 | At login, operators are prompted to select a Department.



2 | Operators then select an Activity.



3 | If the task selected involves a count (e.g. pallets or cases picked), the user may be prompted to enter a value. Simultaneously, the system records time to complete the chosen task.



4 | Data collected can be viewed in various reports on the iWAREHOUSE GATEWAY. Graphical reports as well as data tables can be viewed, sorted, exported, or automated.

For more information on Task Selection or any other iWAREHOUSE capability, please call 1-855-495-6697, visit iwarehouseknows.com, or contact your nearest Raymond Sales & Service Center.